

ALS 2100 SEMI - AUTOMATIC SHOTGUN OWNER'S MANUAL

This manual provides important information for assembling and using your new gun. Please read the Owner's Manual carefully before handling the gun.

Follow safe gun handling procedure at all times. Get instructions from a competent firearms instructor before using the firearm.

If you have questions or concerns about the assembly or the operation of your gun, see your dealer, or a qualified gunsmith.

Keep this manual, and consult it as needed. If you sell or transfer your gun, make sure the manual stays with the gun.

This shotgun, which is produced with the latest possibilities of the contemporary technology, is reliable and practical about its aesthetics, its lightness, its operating system and its expertise in service.

TECHNICAL OPERATION

The ALS 2100 semi-automatic shotgun uses gas pressure from the discharged shell in a precision, spring-loaded mechanism to eject the empty shell, and load a new cartridge into the chamber. The system reduces recoil, and permits the shooter to concentrate on the target.

The ALS 2100 shotgun is one of the lightest semi-automatic shotguns in the world. It is produced in the high standards of European craftsmanship. The instruction in this book will help to assure that it delivers the fine performance for which it was designed.

TEN COMMANDMENTS OF FIREARM SAFETY

1. Always treat every gun as if it were loaded. Don't rely on the safety. Keep the muzzle pointed in a safe direction at all times.
2. Never cross a fence, climb a tree or jump across a ditch with a loaded gun. Always carry your gun so that you can control the direction of the muzzle if you fall or stumble.
3. Never load or carry a loaded gun until you are ready to use it. Never leave a loaded gun unattended, or allow a loaded gun in a building or vehicle.
4. Watch your muzzle, so that the other person doesn't have to. Never point any gun, loaded or unloaded, at anything you do not intend to shoot.
5. Keep guns and ammunition separately, and in locked storage. Use a trigger lock or cable lock on the gun.
6. Don't shoot unless you are absolutely sure of your target and what is beyond it. Never shoot at hard, flat surfaces or at water.
7. Know the range of your gun. Shotgun pellets can travel 500 yards, and shotgun slugs have a range of 1/2 mile. Always be sure of your backstop, and what lies beyond.
8. Always wear eye and ear protection when shooting. Make sure that persons close to you are similarly protected.
9. Always be sure the barrel is clear of any obstruction. Each time you pick up the gun, check the barrel for any possible obstruction. Make sure the barrel is clean, and free of dirt or grease before shooting.
10. Use the right ammunition. Always use clean, dry, original factory-loaded ammunition of the proper type and gauge for your gun. Carry only the proper ammunition for the gun you are shooting. If you are shooting a 12 gauge, do not carry 20 gauge ammunition.

A gun is as safe as the person using it. Make sure that each person who handles the firearm has read the owner's manual, and understands and observes safe gun handling procedure.

USING THE RIGHT CARTRIDGE

The ALS 2100 12 and 20 gauge shotgun is chambered for 3 inch Magnum shells. It is designed to be used with factory-loaded shotshells between 2³/₄" (1¹/₈ OZ) and 3" (1⁷/₈ OZ).

WARNING: Do not use 3¹/₂ inch shells in this shotgun.
WARNING: Never shoot slugs with a full choke. Use only the most open (improved cylinder) choke, which is marked with four cuts.

WARNING: Never shoot steel shot with a full choke. Use only modified, improved cylinder or skeet choke tubes, marked three, four and five cuts respectively.

ASSEMBLY - MOUNTING THE BARREL TO THE RECEIVER

Make sure the barrel is clean and free of heavy lubrication. Remove the wooden fore-end by unscrewing the fore end nut (counter clockwise). Slide the fore-end off the magazine tube. Mount the barrel to the receiver by sliding the barrel into the receiver, with the barrel ring on the magazine tube. Pull the bolt handle half way back to fully seat the barrel in the receiver. (See figure 1 - 2).

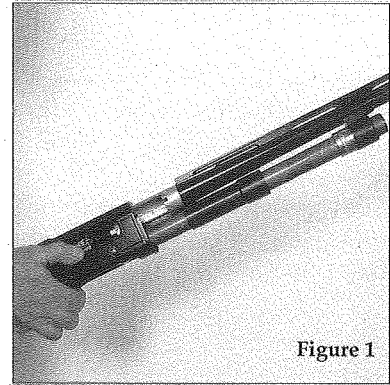


Figure 1

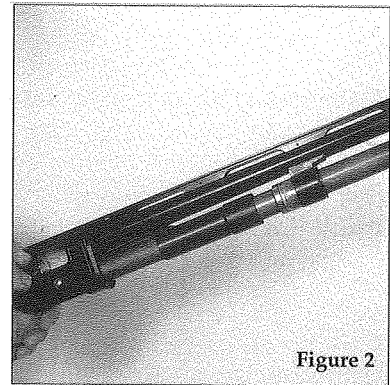


Figure 2

MOUNTING THE FORE-END

Drop the carrier by pressing the cartridge carrier extractor (the black button behind the carrier). Pull back the bolt lever. The action should stay open. Mount the fore-end by carefully sliding it over the magazine tube, and seating it into the receiver. See figure 3. Screw the fore-end nut onto the front of the magazine tube, finger-tight. Close the mechanism by pressing the carrier latch button (the silver button on the side of the receiver).

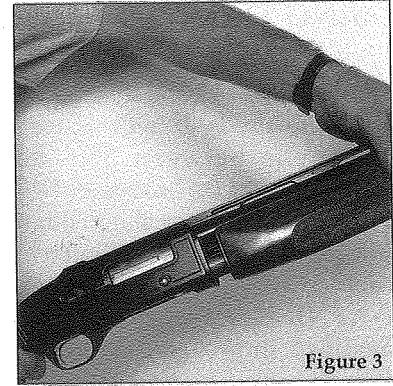


Figure 3

MANUAL TRIGGER SAFETY

Before loading the gun, make sure the manual trigger safety is on. To activate the manual trigger safety, press the manual safety button on the side of the trigger guard from the left side of the gun to the right. When the trigger safety is "on" the black button will protrude from the right side of the trigger guard. When the trigger safety is "off", the button will protrude from the left side of the trigger guide, and the red band around the button will be visible. The manual trigger safety is intended only to lock the trigger. It is not a substitute for safe gun handling.

LOADING A CARTRIDGE INTO THE BARREL

In order to move a cartridge from the carrier to the barrel, pull the bolt lever fully to the rear, and release it. The magazine tube holds 2 cartridges when the magazine plug is installed. The magazine tube holds five 2³/₄ cartridges and four 3" cartridges when the plug has been removed.

To load an additional cartridge, load one cartridge into the barrel, then load another cartridge into the magazine tube, and press the cartridge carrier extractor button to drop the cartridge carrier. When you are ready to fire, put the manual trigger safety in the "off" position. The gun is now ready to fire.

CARTRIDGE LOADING

Put the manual trigger safety "on". Pull the bolt lever fully to the rear, and release it. Load cartridges by sliding them forward into the magazine tube, depressing the cartridge carrier as you do so. See figure 4.

PLACING CARTRIDGE ON THE CARRIER

After loading the the magazine tube, drop the cartridge carrier by pressing the cartridge carrier extractor button just behind the cartridge carrier, and ahead of the trigger guard. See figure 5.

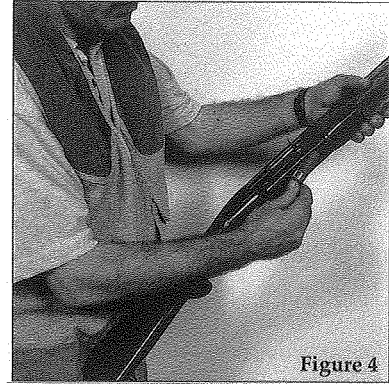


Figure 4

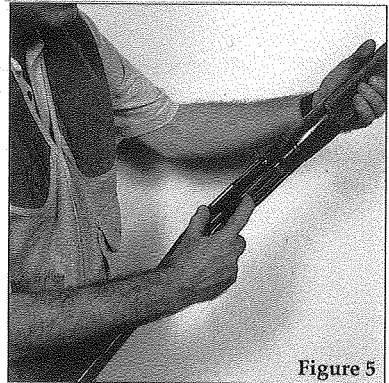


Figure 5

UNLOADING THE GUN

Spent cartridges will be ejected automatically. To unload unspent cartridges from the gun, first be sure the safety is in the "on" position. Never permit your finger or another object to come in contact with the trigger while unloading.

Pull the bolt lever to the rear to eject any cartridge in the chamber. If there is a cartridge in the chamber and a cartridge on the cartridge carrier, this will also load the cartridge from the carrier into the chamber. To eject that cartridge, pull and release the bolt lever again.

If a cartridge remains in the magazine tube, press the cartridge carrier extractor button to place the cartridge onto the carrier. Pull the bolt lever to place that cartridge into the chamber, then pull it again to eject the cartridge from the chamber. Continue until all cartridges have been ejected.

Always check to make sure the gun is completely unloaded when you are not shooting.

REMOVING THE FORE-END

Unload the gun. Press the cartridge carrier extractor button to drop the carrier. (see figure 5) Pull the bolt lever back - it should stay locked. Unscrew the fore-end nut (counter clockwise) and remove it. See figure 6. Slide the fore-end toward the muzzle, and remove it. (See figure 7)

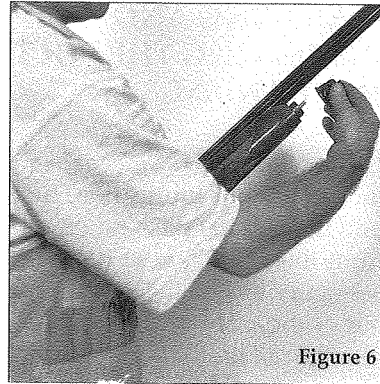


Figure 6

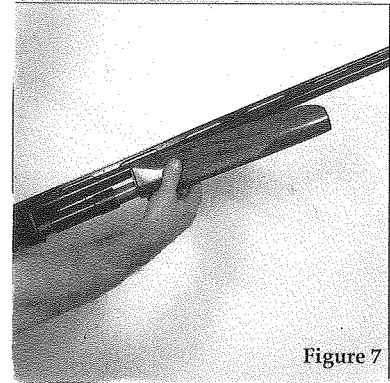


Figure 7

REMOVING THE BARREL

After removing the fore-end (see instructions on previous page), pull the barrel out of the receiver and slide it off the magazine tube. See figure 8. In order to assure proper operation of the semi-automatic mechanism, it is important to clean and lubricate the barrel ring and magazine tube after each shooting session. Use a good quality gun cleaning solvent and oil. (See figure 9).

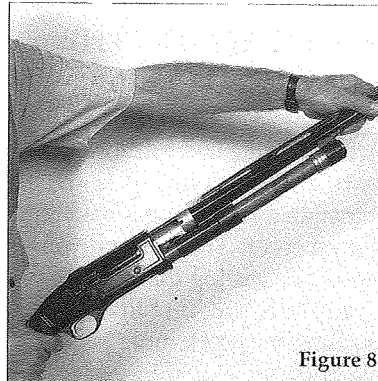


Figure 8

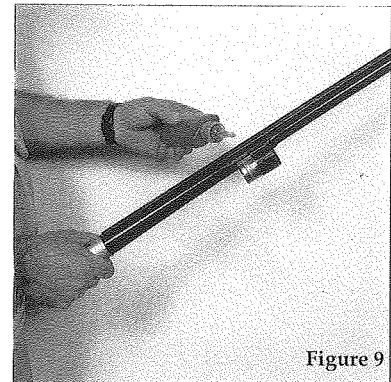


Figure 9

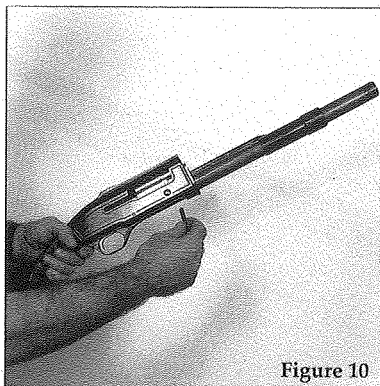


Figure 10

REMOVING AND INSTALLING THE BOLT MECHANISM

To remove the bolt mechanism for cleaning or lubrication, first pull the bolt handle straight out from the right side of the bolt. See figure 10. Pull the mechanism out of the front of the receiver. See figure 11.

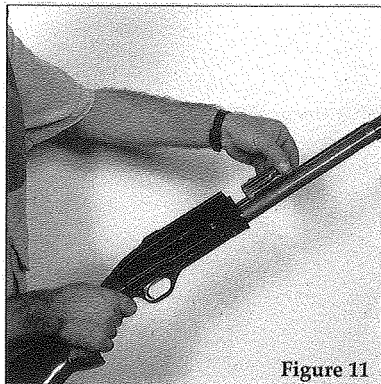


Figure 11

REINSTALLING THE BOLT MECHANISM

After cleaning and lubricating the bolt mechanism, it can be reinstalled by sliding it back into the receiver. The hammer must be cocked during this procedure. Complete the installation by pushing the bolt handle back into the bolt.

REINSTALLING THE TRIGGER GROUP

After cleaning and lubricating the trigger group, it is reinstalled by pressing the carrier latch button while pushing the trigger group rearward. Align the hole in the trigger group with the hole for the receiver pin, and re-install the receiver pin.

REMOVAL AND RE-INSTALLATION OF THE TRIGGER GROUP

Unload the gun. In order to remove the trigger group, push the receiver pin through the receiver and remove it. While pushing the carrier latch button, push the trigger group forward and remove it. See figure 12.

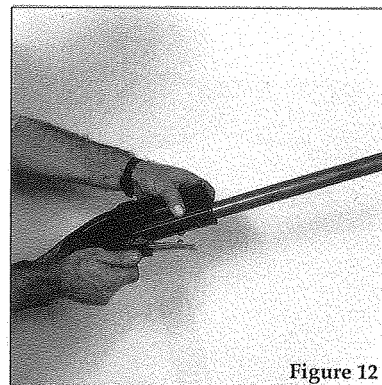


Figure 12

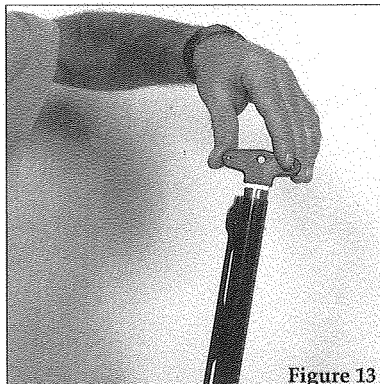


Figure 13

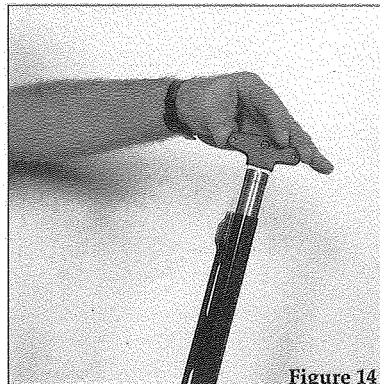


Figure 14

REMOVING AND REINSTALLING CHOKE TUBES

Unload the gun and put the safety in the "on" position. Remove a choke tube by inserting the choke key, and turning it counter clockwise. After cleaning and lubricating, a choke tube may be reinstalled by starting the threads by hand, then tightening the choke tube with the choke key.

After each shooting session, the choke tube should be removed, cleaned, lubricated and reinstalled to prevent corrosion.

Consult the choke value chart for suggested values.

GENERAL MAINTENANCE SUGGESTIONS

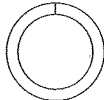
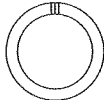
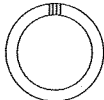
Proper maintenance is important to assure the best functioning of the gun, and the safety of the shooter.

- *Before using the shotgun, make sure that the barrel is clean, and free of any grease or obstruction.*
- *After each shooting session, dismantle the barrel, the barrel choke and the bolt mechanism for cleaning and lubrication. After cleaning and lubricating, reinstall them as instructed.*
- *After every shooting session, clean the magazine tube, the barrel ring and the gas ports (the two small holes that pass from the barrel to the inside of the barrel ring).*
- *Periodically during a shooting session, check the tightness of the fore-end nut. If the nut becomes loose, gas will leak and the semi-automatic mechanism will not function properly.*

WHAT'S MULTI CHOKE?

The purpose of multi choke is to make barrel's tip narrowed down to shoot for and more collectively or to enlarge barrel's tip to shoot more wider groupment for small shots.

CHOKE VALUES AND AREAS USED FOR SEMI-AUTOMATIC SHOTGUN

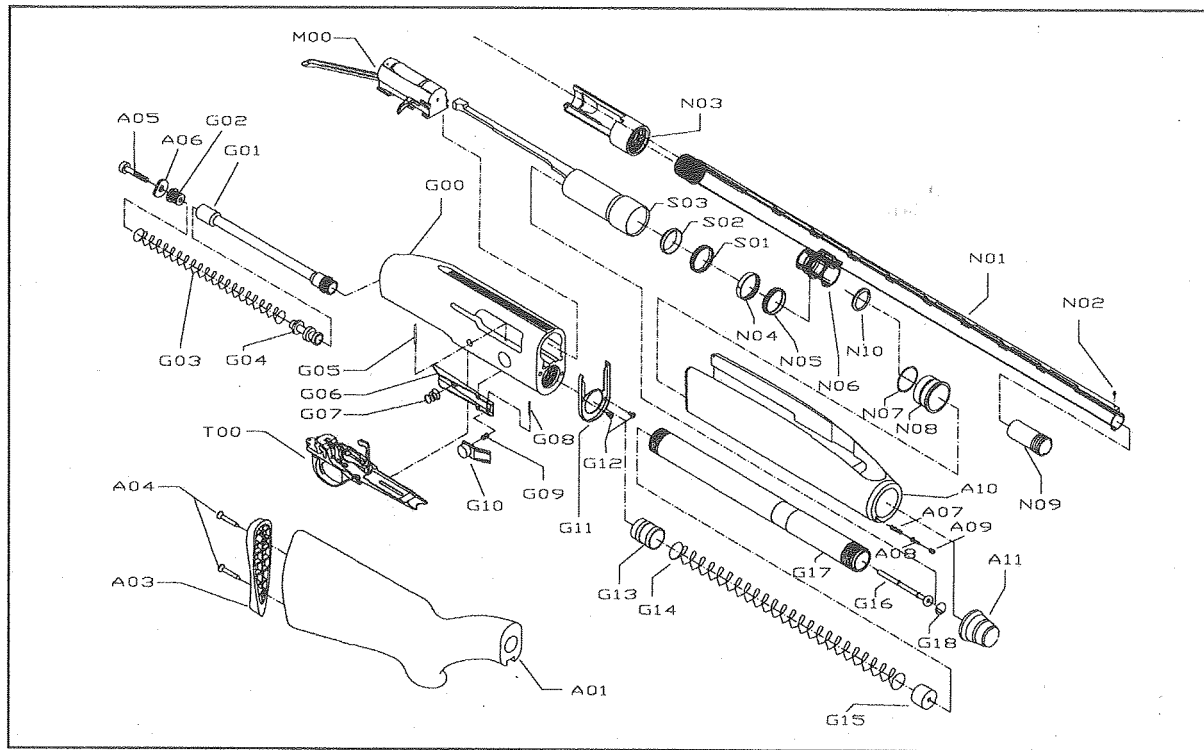
CHOKE VALUE	AREAS USED	SYMBOL
* FULL	For duck and goose hunting with 40-45 yard shots For long range hunting with lead shot and tight groups.	
*** MODIFIED	For hunting woodcock, pheasant & quail with 30-35 yard shots Long range hunting with steel shot and tight groups.	
**** IMPROVED CYLINDER	For quail, dove and target shooting. For shorter distance more open shooting	

WARNING:

Do not use choke values 1 or 3 with slugs, single bullets or single projectiles. Do not use choke value 1 with steel shot.

Discharging firearms in poorly ventilated areas, cleaning firearms or handling ammunitions may result in exposure to lead and other substances known to the State of California to cause birth defects, reproductive harm, and other serious physical injury. Have adequate ventillation at all times. Wash hands throughly after exposure.

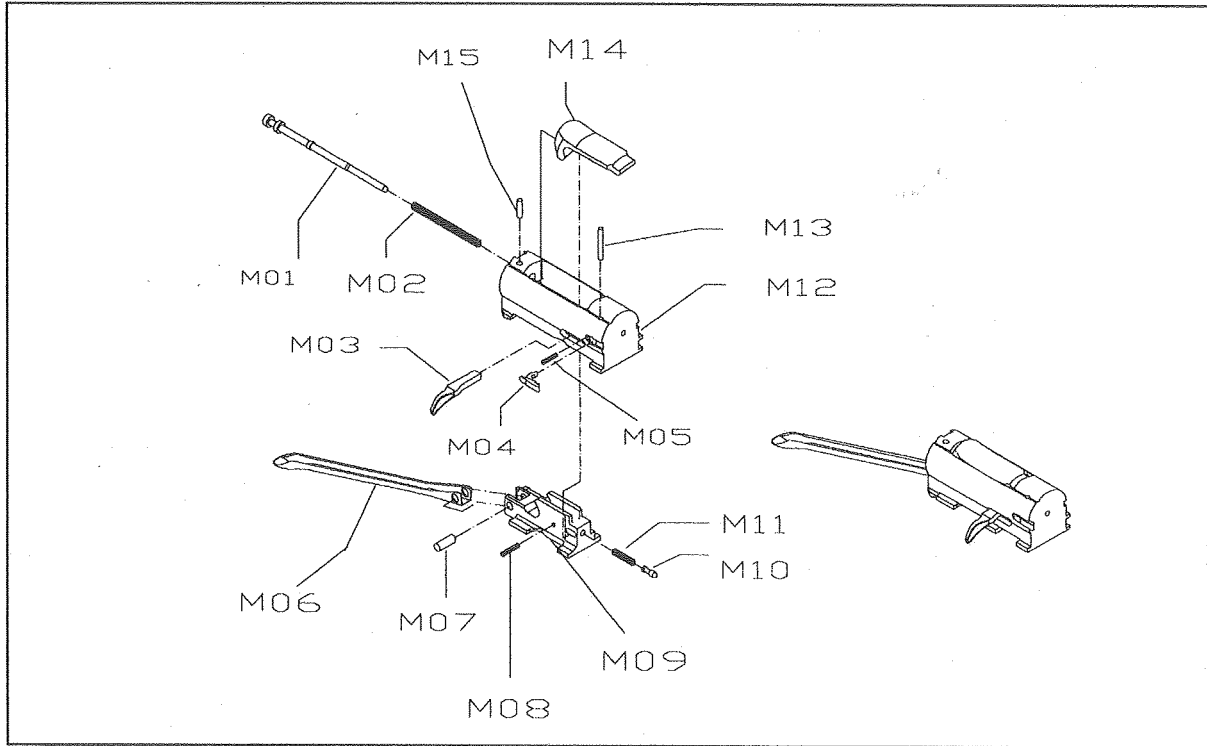
GENERAL ASSEMBLY



GENERAL ASSEMBLY - PART LISTING

Stock No	Description	Stock No	Description
G00	RECEIVER	A04	STOCK PLATE SCREW
G01	RECOIL SPRING TUBE	A05	RECOIL TUBE NUT
G02	STOCK RETANING NUT	A06	RECOIL TUBE PLATE
G03	RECOIL SPRING	A07	FORE-END BLOCKER SPRING
G04	RECOIL SPRING CAP	A08	FORE-END BLOCKER
G05	CARRIER LATCH PIN	A09	FORE-END BLOCKER SCREW
G06	CARRIER LATCH	A10	FORE-END
G07	CARRIER LATCH SPRING	A11	FORE-END NUT
G08	CARRIER LATCH BUTTON PIN	N01	BARREL
G09	CARRIER LATCH BUTTON SPRING	N02	FRONT SIGHT
G10	CARRIER LACTH BUTTON	N03	BREECH
G11	FORE-END LATCH	N04	GAS HOLE PISTON RING 1.
G12	FORE-END LATCH SCREW	N05	GAS HOLE PISTON RING 2.
G13	CARTRIDGE SPRING PLUG	N07	GAS HOLE O-RING
G14	MAGAZINE SPRING	N08	GAS HOLE PLUG
G15	MAGAZINE SPRING CUP	N09	MOBIL CHOKE
G16	MAGAZINE PLUG	N10	GAS HOLE JOINT
G17	MAGAZINE TUBE	M00	BOLT GROUP ASSEMBLY
G18	CARTRIDGE PLUG BLOCKER	S01	CARTRIDGE SLIDING BAR PISTON RING
A01	STOCK	S02	CARTRIDGE SLIDING BAR JOINT
A03	STOCK PLATE	S03	CARTRIDGE SLIDING BAR TUBE

BOLT GROUP ASSEMBLY

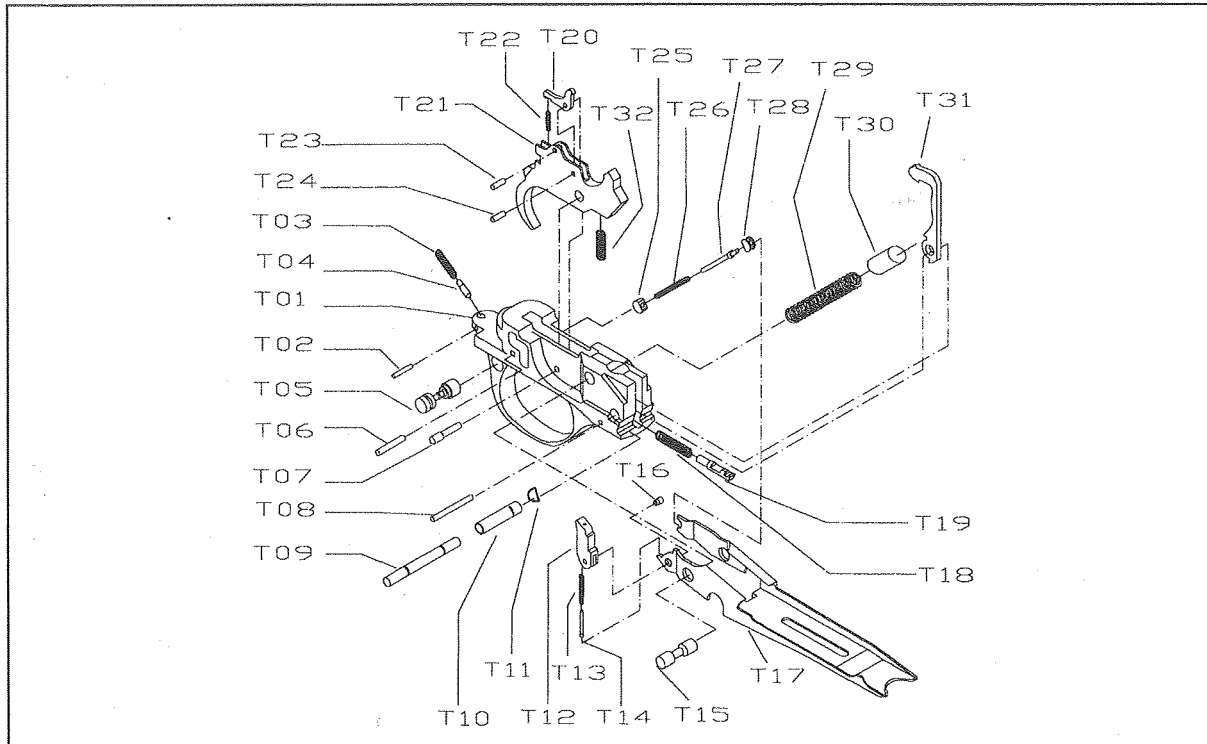


BOLT GROUP - PART LISTING

Stock No Description

M01	FIRING PIN
M02	FIRING PIN SPRING
M03	BOLT HANDLE
M04	EXTRACTOR
M05	EXTRACTOR SPRING
M06	LINK
M07	LINK PIN
M08	BOLT HANDLE SPRING RETAINING PIN
M09	BLOCKER SLIDING BAR
M10	BOLT HANDLE PIN
M11	BOLT HANDLE PIN SPRING
M12	BOLT
M13	EXTRACTOR PIN
M14	BLOCKER SLIDING BAR
M15	FIRING RETAINING PIN

TRIGGER GROUP ASSEMBLY



TRIGGER GROUP - PART LISTING

Stock No	Description	Stock No	Description
T01	TRIGGER GUARD	T17	CARRIER
T02	SAFETY SPRING RETAINING PIN	T18	CARTRIDGE CARRIER EXTRACTOR SPRING
T03	SAFETY PLUNGER SPRING	T19	CARTRIDGE CARRIER EXTRACTOR
T04	SAFETY PLUNGER SPRING PIN	T20	DISCONNECTOR
T05	HAND SAFETY	T21	TRIGGER
T06	TRIGGER FIXING PIN	T22	DISCONNECTOR PLUNGER SPRING
T07	TRIGGER PIN	T23	DISCONNECTOR PLUNGER PIN
T08	CARTRIDGE CARRIER EXTRACTOR PIN	T24	DISCONNECTOR PLUNGER PIN
T09	RECEIVER PIN	T25	CARRIER SPRING CYLINDER 1.
T10	HAMMER TUBE PIN	T26	CARRIER SPRING
T11	HAMMER TUBE PISTON RING	T27	CARRIER SPRING PIN
T12	BREECH BOLT LATCH	T28	CARRIER SPRING CYLINDER 2.
T13	BREECH BOLT LATCH SPRING	T29	HAMMER SPRING
T14	BREECH BOLT LATCH SPRING PIN	T30	HAMMER SPRING CAP
T15	CARRIER PIN	T31	HAMMER
T16	BREECH BOLT LATCH PIN	T32	TRIGGER SPRING